

变频风扇系列



变频风扇电机系列

EC FAN SERIES

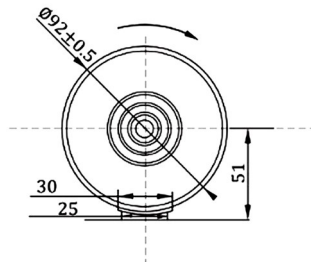
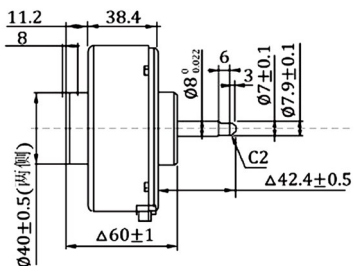
EC FAN SERIES BRUSHLESS MOTOR

X-TEAM 变频风扇系列 EC 电机

医疗设备、办公设备、自动化设备

基本参数 Specifications

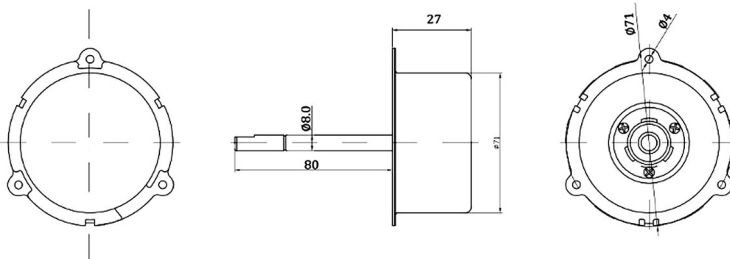
产品型号	Model	XT90
额定电压	Voltage	DC 310V
空载转速	Idle Speed	1500 rpm/min
空载电流	No-load Current	0.1A Max
负载转速	Load Speed	1200 rpm/min
负载电流	Load Current	0.3A Max
负载转矩	Load Torque	150m N.m
驱动方式	Driving Methods	PW(1-15k)/VSP(0.5-4.7V)
功率	Power	80w



按摩设备、医疗设备、空气净化器、落地扇、热水器风机

基本参数 Specifications

产品型号	Model	XT71
额定电压	Voltage	DC 12/24V
空载转速	Idle Speed	2500 rpm/min
空载电流	No-load Current	0.15A Max
负载转速	Load Speed	1500 rpm/min
负载电流	Load Current	2.5A Max
负载转矩	Load Torque	85m N.m
驱动方式	Driving Methods	PW(1-15k)/VSP(0.5-4.7V)
功率	Power	60w



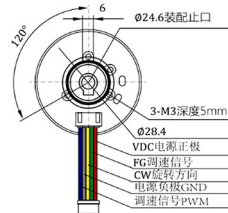
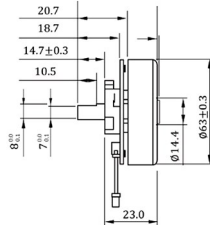
EC FAN SERIES BRUSHLESS MOTOR

X-TEAM变频风扇系列 EC电机

智能家居、智能机器人、落地风扇、台式风扇、排气扇

基本参数 Specifications

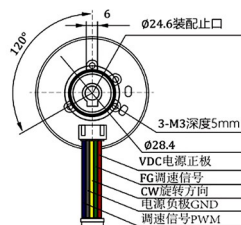
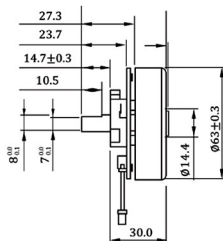
产品型号	Model	XT63s
额定电压	Voltage	DC 12/24V
空载转速	Idle Speed	1500 rpm/min
空载电流	No-load Current	0.12A Max
负载转速	Load Speed	1200 rpm/min
负载电流	Load Current	2.3A Max
负载转矩	Load Torque	82m N.m
驱动方式	Driving Methods	PW(1-15k)/VSP(0.5-7.4V)
功率	Power	55w



智能家居、智能机器人、落地风扇、台式风扇、排气扇

基本参数 Specifications

产品型号	Model	XT63
额定电压	Voltage	DC 12/24/36V
空载转速	Idle Speed	1500 rpm/min
空载电流	No-load Current	0.12A Max
负载转速	Load Speed	1200 rpm/min
负载电流	Load Current	2.3A Max
负载转矩	Load Torque	82m N.m
驱动方式	Driving Methods	PW(1-15k)/VSP(0.5-7.4V)
功率	Power	55w



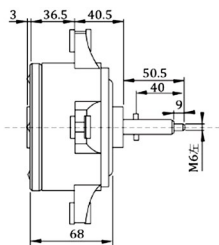
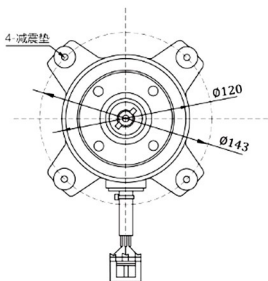
EC FAN SERIES BRUSHLESS MOTOR

X-TEAM 变频风扇系列 EC电机

空气净化、抽油烟、落地扇、塔扇、热水器风机、排气扇

基本参数 Specifications

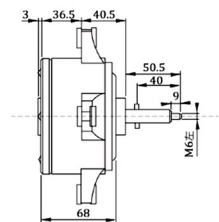
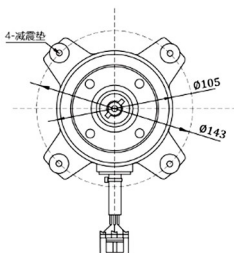
产品型号	Model	XT120
额定电压	Voltage	DC 310V
空载转速	Idle Speed	1500 rpm/min
空载电流	No-load Current	0.1A Max
负载转速	Load Speed	1050 rpm/min
负载电流	Load Current	0.5A Max
负载转矩	Load Torque	170m N.m
驱动方式	Driving Methods	PW(1-15k)/VSP(0.5-4.7V)
功率	Power	120w



冷暖风、空气净化器、抽油烟机、落地扇、塔扇、热水器风机

基本参数 Specifications

产品型号	Model	XT105
额定电压	Voltage	DC 310V
空载转速	Idle Speed	13500 rpm/min
空载电流	No-load Current	0.1A Max
负载转速	Load Speed	1000 rpm/min
负载电流	Load Current	0.4A Max
负载转矩	Load Torque	165m N.m
驱动方式	Driving Methods	PW(1-15k)/VSP(0.5-4.7V)
功率	Power	100w



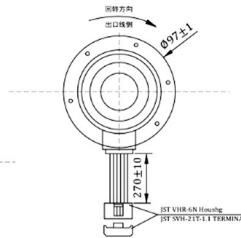
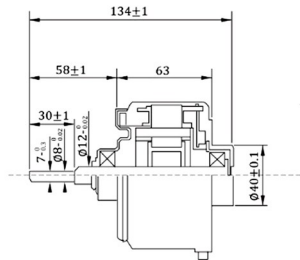
EC FAN SERIES BRUSHLESS MOTOR

X-TEAM变频风扇系列 EC电机

按摩设备、空气净化器、落地扇、塔扇、空调机、抽油烟机

基本参数 Specifications

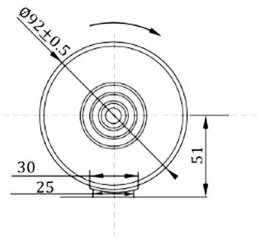
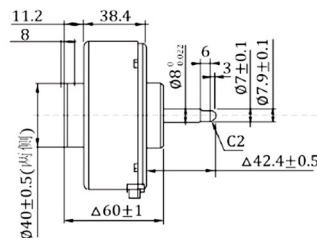
产品型号	Model	XT97
额定电压	Voltage	DC 310V
空载转速	Idle Speed	1500 rpm/min
空载电流	No-load Current	0.1A Max
负载转速	Load Speed	1200 rpm/min
负载电流	Load Current	0.35A Max
负载转矩	Load Torque	160m N.m
驱动方式	Driving Methods	PW(1-15k)/VSP(0.5-7.4V)
功率	Power	85w



空气净化器、落地扇、塔扇、按摩设备、医疗设备、抽油烟机

基本参数 Specifications

产品型号	Model	XT92
额定电压	Voltage	DC 310V
空载转速	Idle Speed	1500 rpm/min
空载电流	No-load Current	0.1A Max
负载转速	Load Speed	1200 rpm/min
负载电流	Load Current	0.3A Max
负载转矩	Load Torque	150m N.m
驱动方式	Driving Methods	PW(1-15k)/VSP(0.5-7.4V)
功率	Power	80w



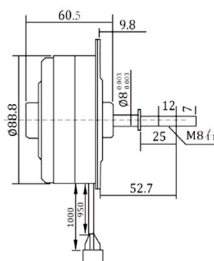
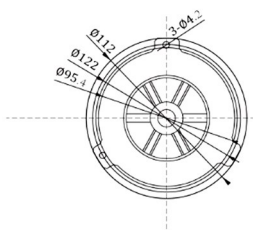
EC FAN SERIES BRUSHLESS MOTOR

X-TEAM 变频风扇系列 EC 电机

空气净化器、塔扇、冷暖风机、按摩设备、医疗设备

基本参数 Specifications

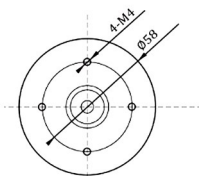
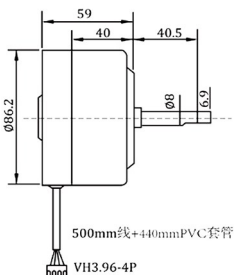
产品型号	Model	XT88
额定电压	Voltage	DC 12/24V
空载转速	Idle Speed	2300 rpm/min
空载电流	No-load Current	0.2A Max
负载转速	Load Speed	2000 rpm/min
负载电流	Load Current	2A Max
负载转矩	Load Torque	89m N.m
驱动方式	Driving Methods	PW(1-15k)/VSP(0.5-4.7V)
功率	Power	50w



塔扇、油烟机、冷暖风、按摩设备、医疗设备、排气扇

基本参数 Specifications

产品型号	Model	XT86
额定电压	Voltage	DC 12/24V
空载转速	Idle Speed	1500 rpm/min
空载电流	No-load Current	0.15A Max
负载转速	Load Speed	1200 rpm/min
负载电流	Load Current	2.9A Max
负载转矩	Load Torque	90m N.m
驱动方式	Driving Methods	PW(1-15k)/VSP(0.5-4.7V)
功率	Power	68w



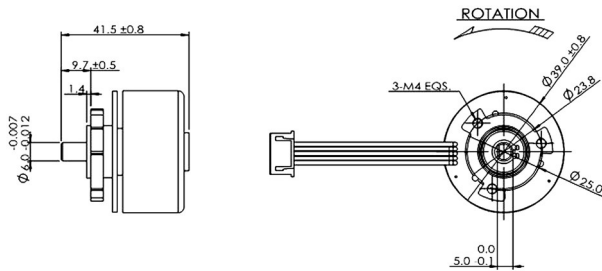
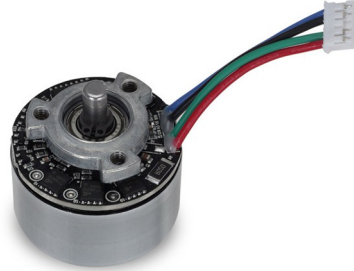
EC FAN SERIES BRUSHLESS MOTOR

X-TEAM变频风扇系列 EC电机

筋膜枪、按摩设备、医疗设备、美容仪器

基本参数 Specifications

产品型号	Model	XT4818
额定电压	Voltage	7.4V
额定转速	Rated speed	2300 RPM
空载转速	Idle speed	3300 RPM
负载电流	Rated current	2.0A
空载电流	Idle current	0.3A
额定力矩	Load Torque	60m N.m
定子槽数	Stator slot	12 Slots
温度范围	Temperature	-10°C~60°C



吹风机、美发棒、理疗仪、小型吸尘器、干手器

基本参数 Specifications

产品型号	Model	XT3050
额定电压	Rated voltage	AC 220V/50Hz
额定电流	Rated current	0.9A
额定功率	Rated power	90W
额定转速	Rated speed	110000rpm/min
额定风速	Wind speed	23m/s Max.@110000 RPM REF
额定风压	Wind pressure	90g Max.@110000 RPM REF
升温	Temperature rise	50K Max
噪音	Noise	60dB (A)

